



GAT MONTHLY MEMBERSHIP PROGRESS REPORT

Results as of: 7/31/2023

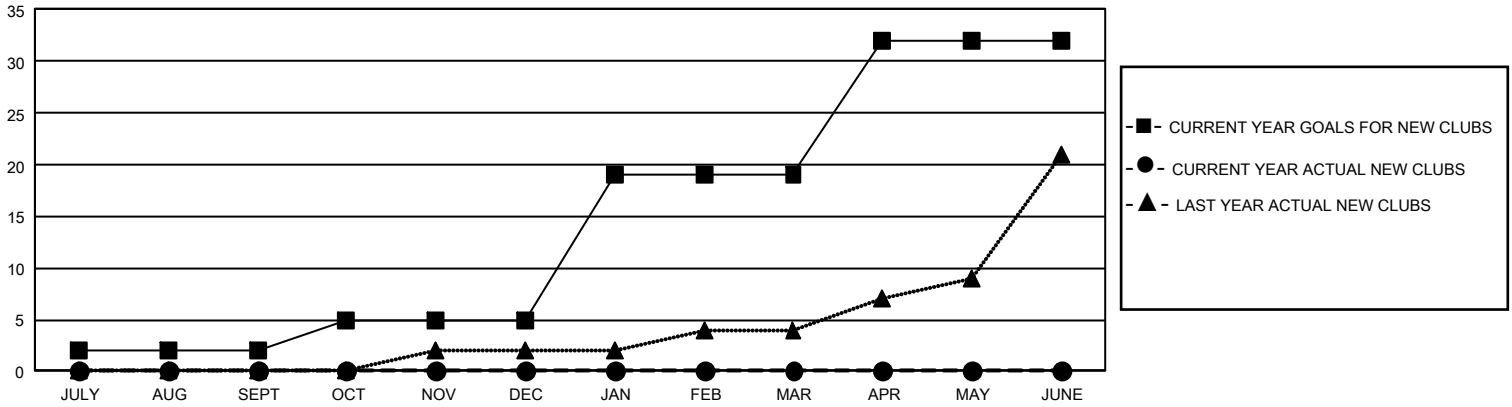
GMT Constitutional Area 4, Group H

REPORT DOES NOT INCLUDE CLUBS IN UNDISTRICTED AREAS.

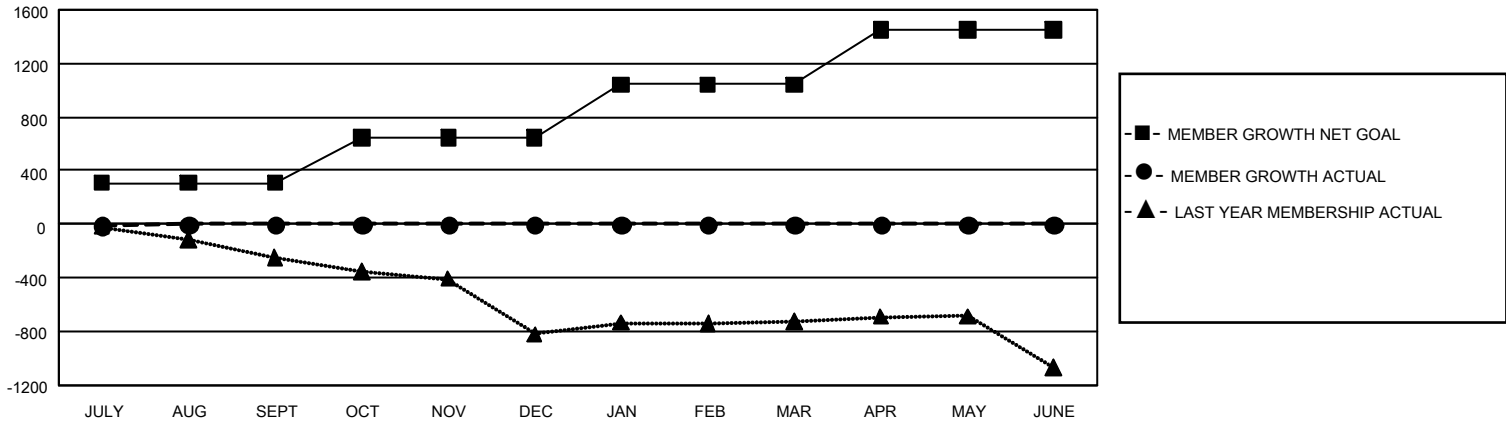
Clubs			
RESULTS FOR 2023-2024			
QUARTER	NEW CLUB GOAL	NEW CLUBS	DROPPED CLUBS
JULY/AUG/SEPT	6	0	10
OCT/NOV/DEC	9	0	0
JAN/FEB/MAR	42	0	0
APR/MAY/JUNE	39	0	0

Members			
RESULTS FOR 2023-2024			
QUARTER	MEMBER GROWTH NET GOAL	MEMBER GROWTH ACTUAL	DROPPED MEMBERS ACTUAL (including transfers)
JULY/AUG/SEPT	309	229	197
OCT/NOV/DEC	337	0	0
JAN/FEB/MAR	397	0	0
APR/MAY/JUNE	410	0	0

GOALS AND ACTUAL NEW CLUBS CUMULATIVE



GOALS AND ACTUAL MEMBERS CUMULATIVE



DROPPED CLUBS: 10	124 CLUBS OF 1,461 ADDED 1 OR MORE NEW MEMBERS	GENDER DISTRIBUTION	
		MALE 22,997 (75.12%) FEMALE 7,615 (24.88%) NON BINARY 0 (0.00%) PREFER NOT TO ANSWER 0 (0.00%)	
DROPPED MEMBERS		CLICK HERE FOR CUMULATIVE MEMBERSHIP DATA	TOTAL FAMILY UNIT MEMBERS 1,150
DECEASED 23 CLUB CANCELLED 0 OTHER 174 TOTAL 197			FAMILY MEMBERS PAYING HALF DUES 574